



BFS COOLCARE

SUARNABHUMI AIRPORT

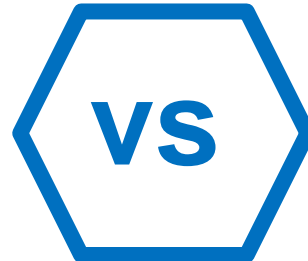


CUTTING COSTS BY MAXIMIZING SPACE

FOAM CARTON SHIPPING



Foam boxes & gel ice are expensive to purchase and ship. To ship 1200kg of product in foam boxes requires 40kg gel ice and 2 ULD's. Airlines don't like them!!!



PAPER/PLASTIC CARTON SHIPPING

(Coolcare no foam boxes no gel ice)



Coolcare loads the same 1200kg in 1 ULD

Lower purchase cost

Lower annual delivery cost

Lower airfreight rates

(Lowering the CBM volume of a shipment and freeing up cargo space gives airlines the incentive to offer a lower freight rate)

Coolcare uses cover wraps and specially lined containers to protect perishables from heat exposure during shipping

OUR SERVICE

What we offer our Coolcare customers:

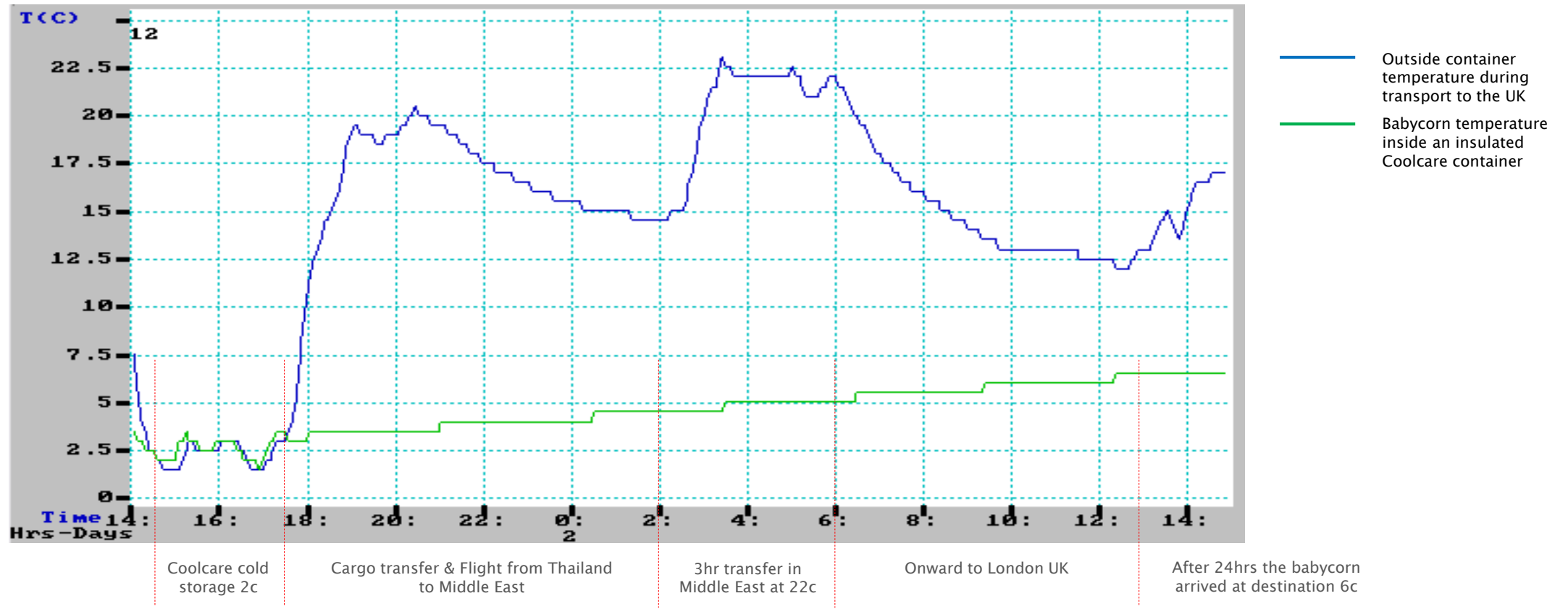
- Cold room storage using one of 5 temperature controlled storage rooms (*-18c, 2-4c, 4-8c, 15-20c, 25c*)
- Priority treatment at cargo terminal (*VIP service for your produce*)
- Temperature monitoring (*Making sure your produce is kept at the right temperature*)
- Forced air cooling (*Fast cooling method during cold storage*)
- Thermally protected aircraft containers/Pallets (*Temperature protection during shipping*)
- Supervised handling and loading (*Better handling, less product damage, reduced waste*)
- External container protection for daytime shipments (*Airside thermal covers*)
- Full shipment report (*Your kept informed*)
- Start to finish temp recording (data loggers) + fully explained graph report (*You can see what is happening to your shipment while in transit*)
- Cold chain efficiency advice and cost saving opportunities (*Free advice from logistic solution experts*)
- Packaging advice (*low cost eco cartons*)

YOUR BENEFIT

What Improvements are there for customers:

- Extending produce freshness & shelf life *(Improved cold chain efficiency for maximum freshness)*
- Reduced logistics cost through efficient handling *(Better efficiency will reduce shipping costs)*
- Cold chain gaps identified and ongoing logistics support *(Free advise on best handling practice)*
- Cold storage at cargo terminal *(Further reduce pack house cost by using cargo terminal cold rooms)*
- Switch from foam cartons to paper/plastic boxes, no gel ice required *(Large savings to be made on carton/gel ice purchase cost as well as delivery and freight charges)*
- Reduced waste for consignee at destination *(lower disposal costs and reduced landfill)*
- Use of Cargo terminal equipment for speedy load/unload *(Free loan of pallets and thermal covers for inbound deliveries to reduce hand stacking and use of cold trucks)*
- Reduced produce damage through poor handling *(Supervised handling by IATA perishable trained staff)*
- Ability to ship on low cost carriers and transit airlines without compromising quality *(transit stop airlines traditionally offer lower freight rates but come at a cost to quality when shipping unprotected perishables)*
- Lower risk of customer claims due to product damage *(Good handling practice and consistent quality keeps customers happy!!!)*

COOLCARE SHIPMENT

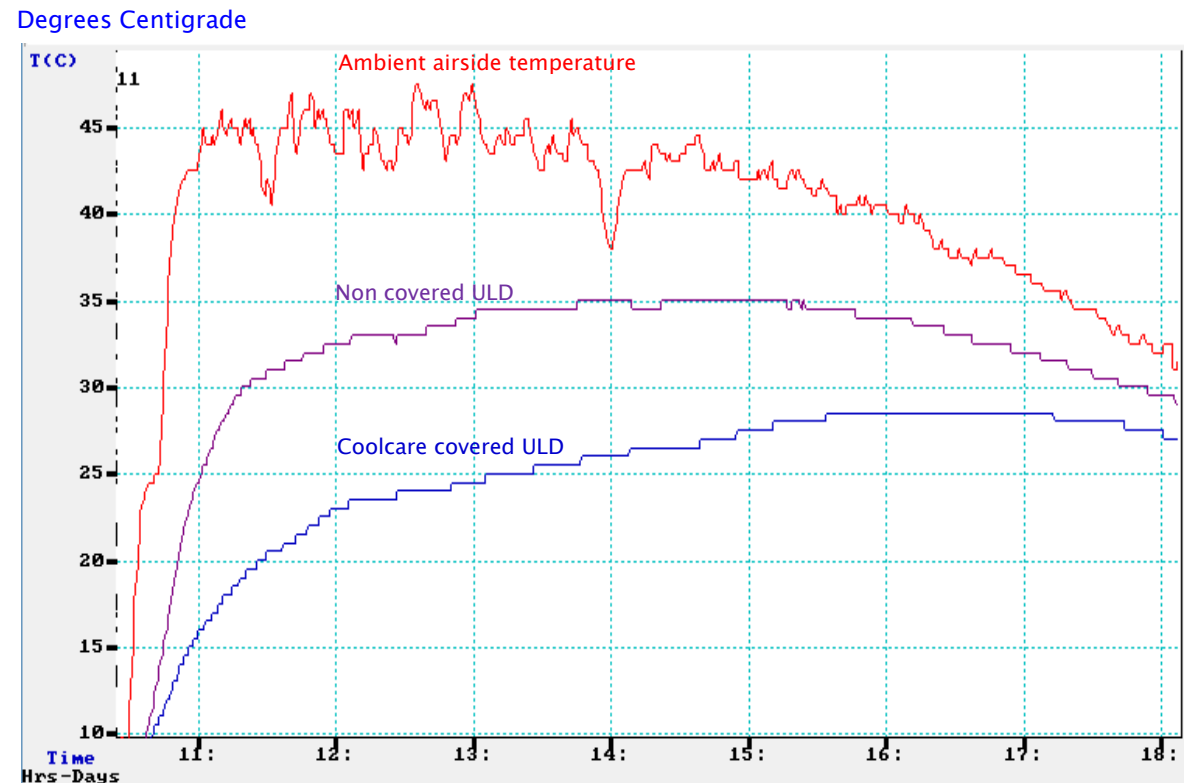


900kg of Babycorn being sent to the UK from Thailand using Coolcare

AIRSIDE COVER PROTECTION

Highly reflective and made to measure airside covers provide a high level of protection against the damaging infrared rays and extreme temperatures perishable cargo is exposed to when transported from cold storage to the aircraft and vice versa.

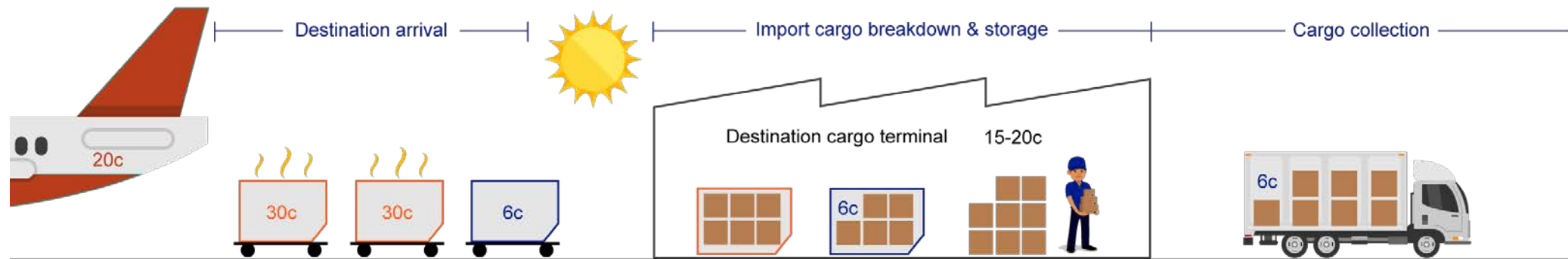
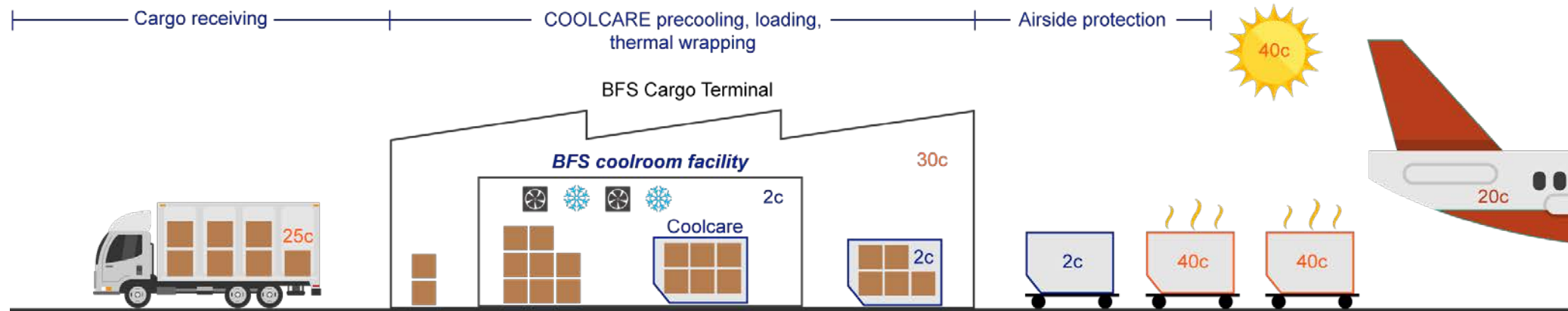
Without airside protection aircraft containers become little more than hot boxes in which temperatures can exceed 45 degrees centigrade and quickly ruin perishable cargo



7hr Airside temperature test conducted September 2015

EXPORTING WITH COOLCARE – NO FOAM BOX / NO GEL ICE / NO HIDDEN COSTS

z- No foam box / No gel ice / No hidden costs



Cooled – Monitored – Insulated – Protected

C = Degree Centigrade

CONTACT US

If you would like to know more about our service and how we can help your business please contact :

- BFS Customer care Team
Tel: +66 (0) 2131 5512, 23
+66 (0) 2131 5555 Ext. 5611, 5612, 5613
Email: CargoCustomerCare@BFASia.com
- Freshport Operations Team (Suvarnabhumi Airport)
Tel: +66 (0) 2 134 6188
Email: bkkspecialcare@gmail.com
- Mr. Chris Reichert (Operations Manager)
Tel: +66 (0) 85 803 4809
Email: chris@freshport.asia

Website: www.bangkokflightservices.com

